

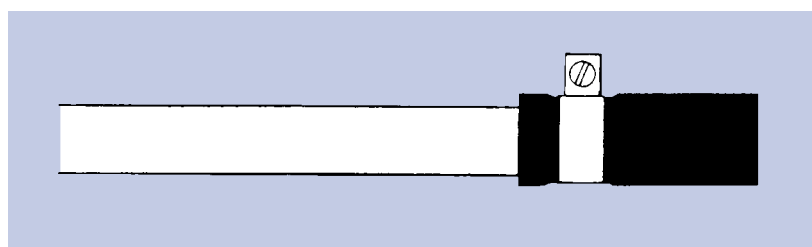
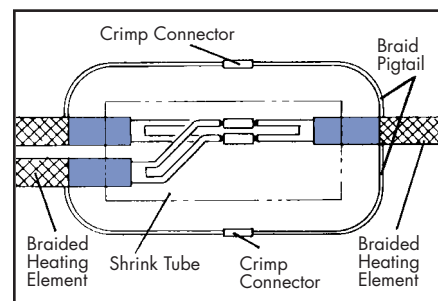


Accessory Products



1548-50211 Splice Connection Kit

with heat shrink sleeves. For all 2700 series heating elements. Ten (10) splices per kit.



SRHC-ES End Seal

For use with 2000, 2300, and 2700 families of heating cables in ordinary and Division 2 locations

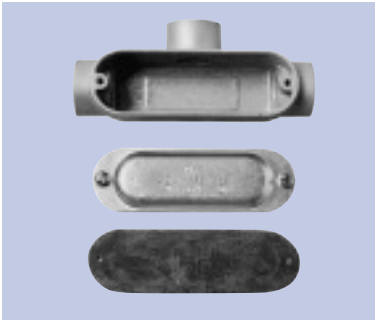
End Seal Components

- End Cap
- Clamp
- Sealant

Visit Us At: www.rsc-heattrace.com



Accessory Products



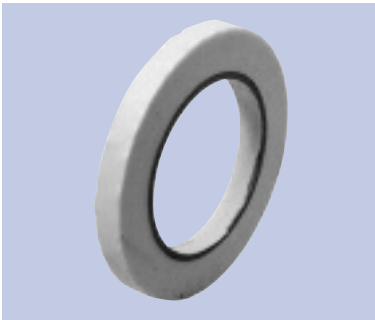
1527-26010 Conduit Box

Three Hub, 3/4" NPT



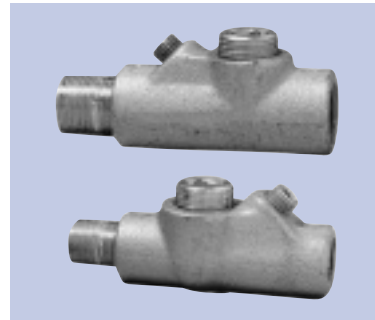
1548-60400 Caution Label

"Electric Heat Tracing"
(25 labels per pack)



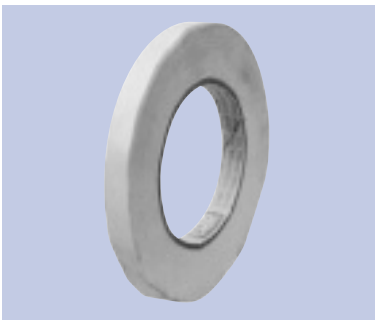
1528-01017 Fiberglass Adhesive Tape

1/2" x 180 ft.,
130°C (266°F) rated



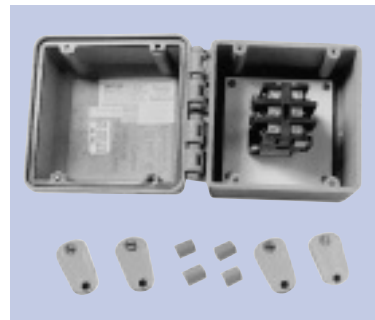
1544-21500 1544-31500 Seal Fitting

1/2" NPT
3/4" NPT



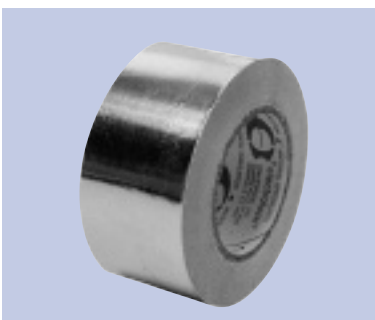
1528-01019 Fiberglass Adhesive Tape

1/2" x 180 ft.,
260°C (500°F) max.



1556-A3008 3-Pole Contactor

40 amps per pole,
600 VAC max.,
120 VAC coil,
NEMA 4X enclosure



1528-0A018 Aluminum Tape

Adhesive-backed
2-1/2" x 180 ft.,
2 mil thick

The material contained in this document is presented in good faith and believed to be reliable and accurate. However, because testing conditions may vary and material quality or information that may be provided in whole or in part by others may be beyond our control, no warranty expressed or implied, is given and Heat Trace Products, LLC can assume no liability for results obtained or damages incurred through the application of the data and tests presented.

ISO 9001 REGISTERED

Heat Trace Products, LLC



ISO 9001 REGISTERED

233 Florence Street
Leominster, MA 01453
Tel: 978-534-2810
Fax: 978-534-2819
www.rsgc-heattrace.com