

1660-13A11

Line Sensing Thermostat



Description

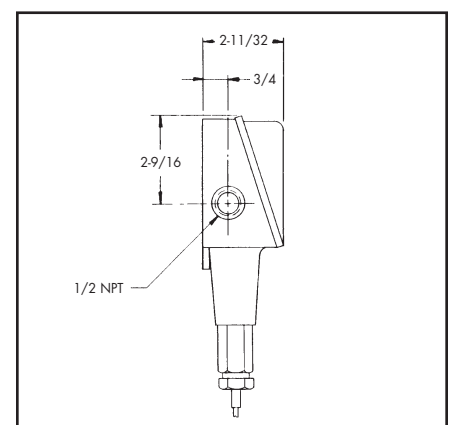
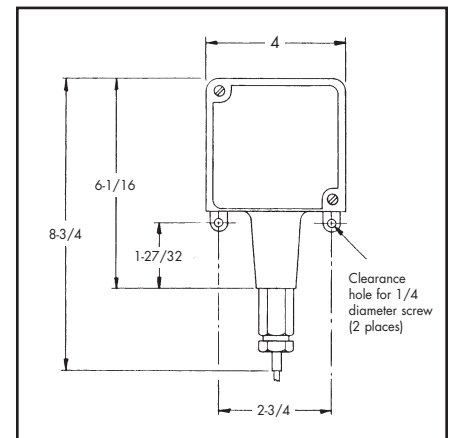
The 1660-13A11 thermostat is a watertight, dust tight and corrosion resistant temperature control in a light weight die cast enclosure with an internal calibrated reference dial and tamper-proof adjustment for outdoor or indoor locations. The liquid-filled thermal system, with its stainless steel bulb and capillary, provides a very dependable and accurate control system.

Wiring

For heater control, low alarm (close on falling temperature) use COM and NC. For high alarm (close on rising temperature) use COM and NO.

Specifications

Enclosure	Die cast aluminum with polyamid epoxy coating, NEMA 4X; water-tight, dust tight and corrosion resistant
Connection	Screw terminals on switch through 1/2-NPT hub
Switch	SPDT UL listed with internal calibrated reference dial and tamper-proof adjustment
Rating	22 amps at 480 VAC
Range	25p – 325pF
Sensor	10 Ft. 304 SS capillary with 1/8" SS bulb
Approval	UL listed/CSA certified
Accuracy	1% of adjustment range



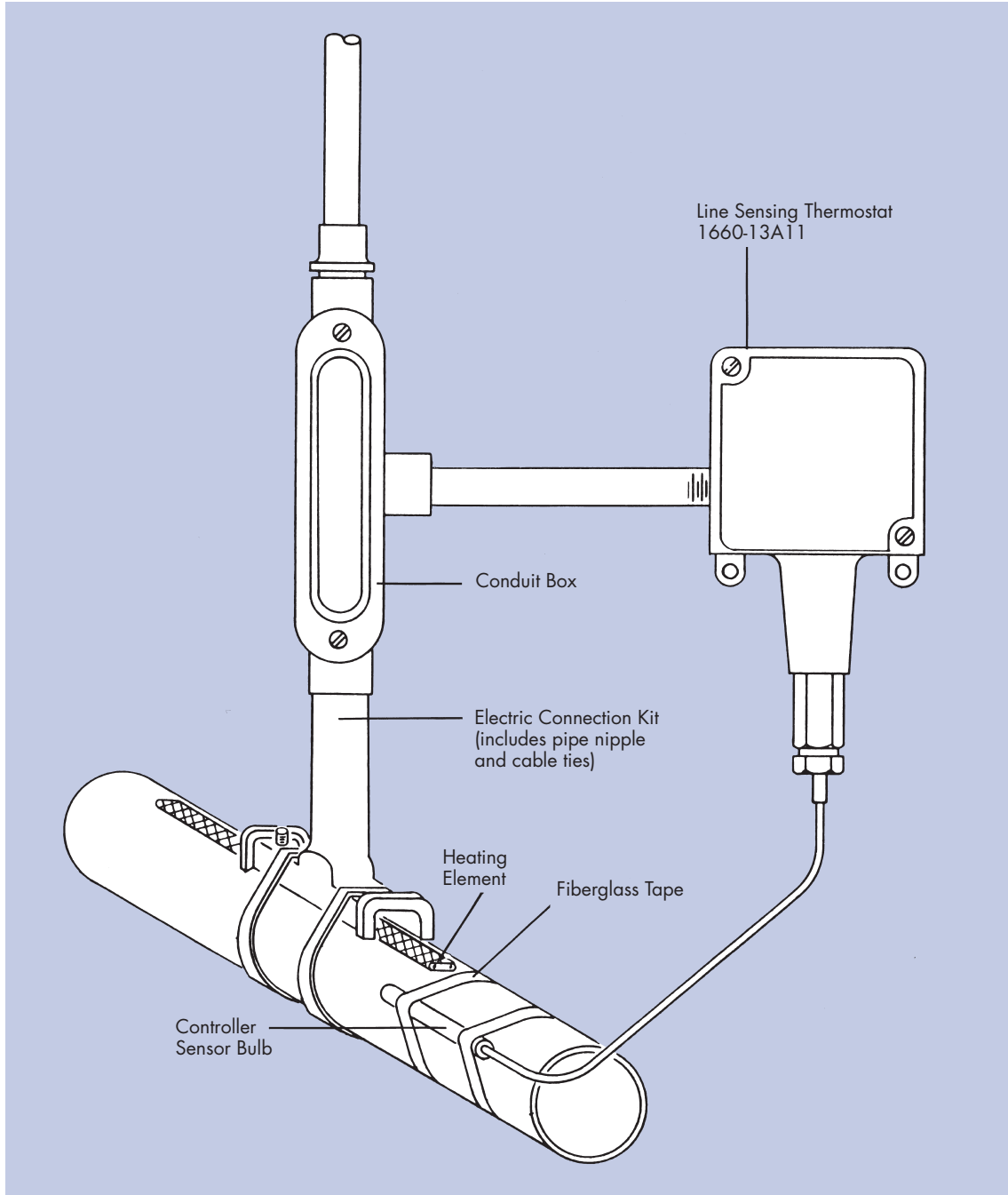
Visit Us At: www.rsc-heattrace.com

1660-13A11

Line Sensing Thermostat



Typical installation for a 1660-13A11 line sensing controller mounted on a pipe.



The material contained in this document is presented in good faith and believed to be reliable and accurate. However, because testing conditions may vary and material quality or information that may be provided in whole or in part by others may be beyond our control, no warranty expressed or implied, is given and RSCC Heat Trace Products can assume no liability for results obtained or damages incurred through the application of the data and tests presented.

ISO 9001/QS 9000 REGISTERED

RSCC Heat Trace Products

172 Sterling Street
Clinton, MA 01510-1922
Tel: 978-365-1235
Fax: 978-368-8054
www.rsc-heattrace.com